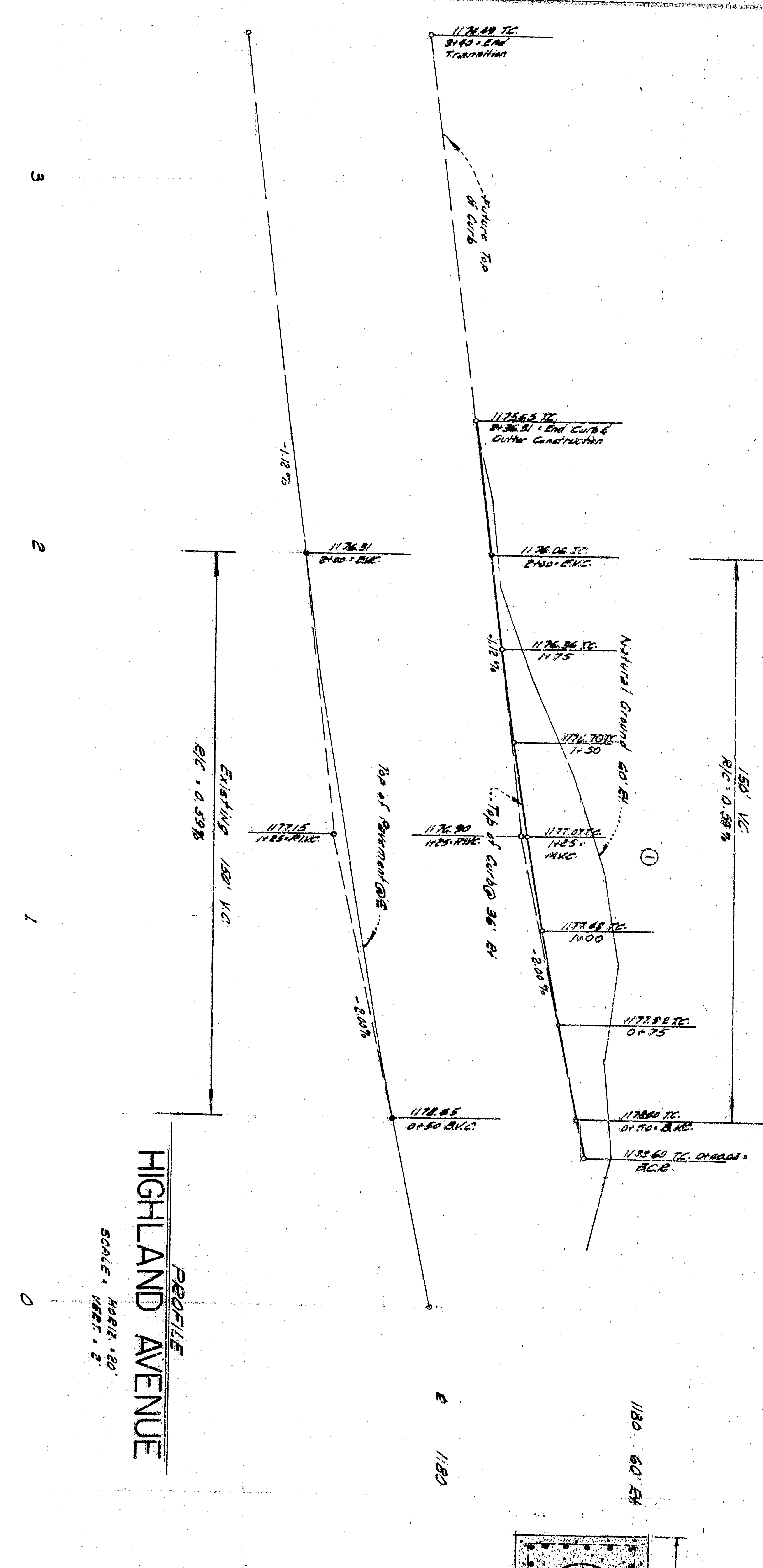
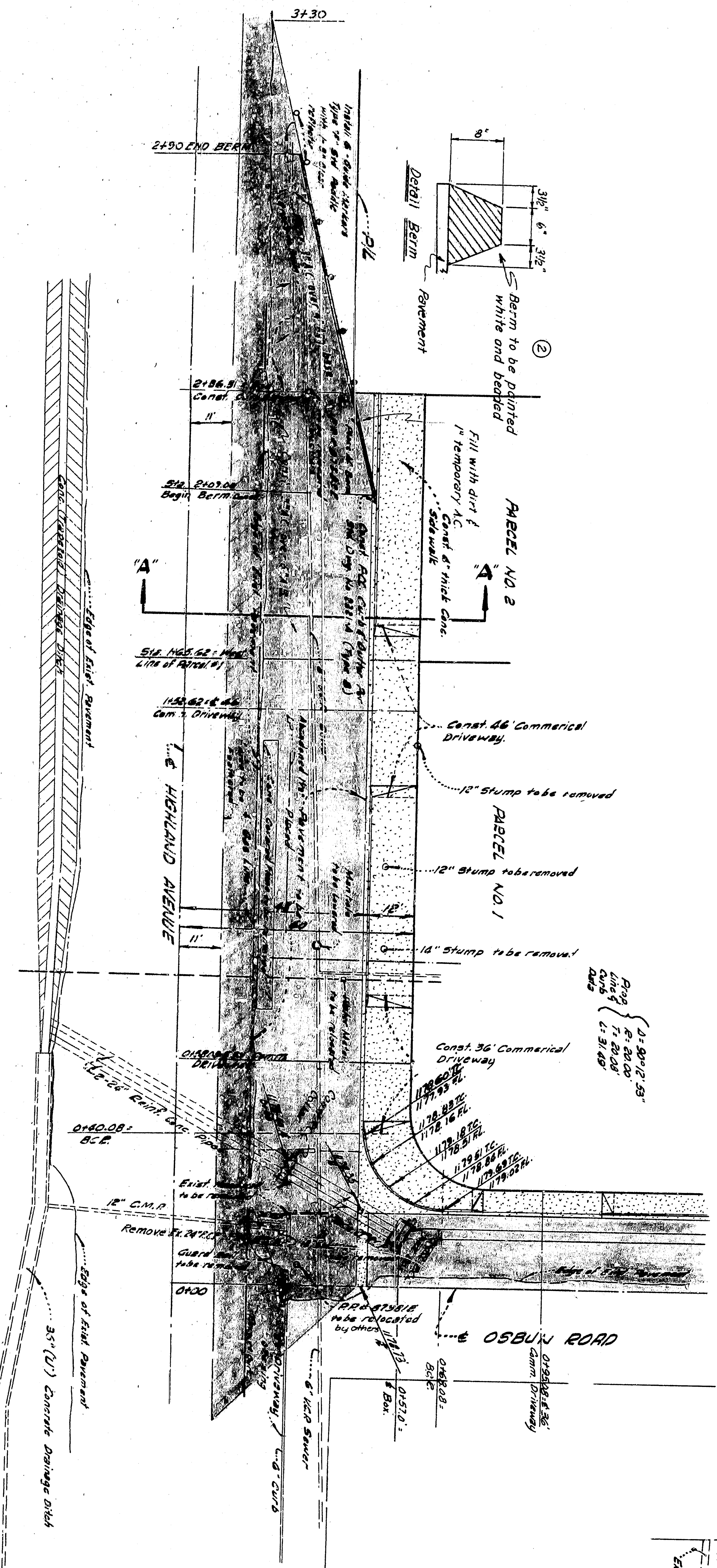
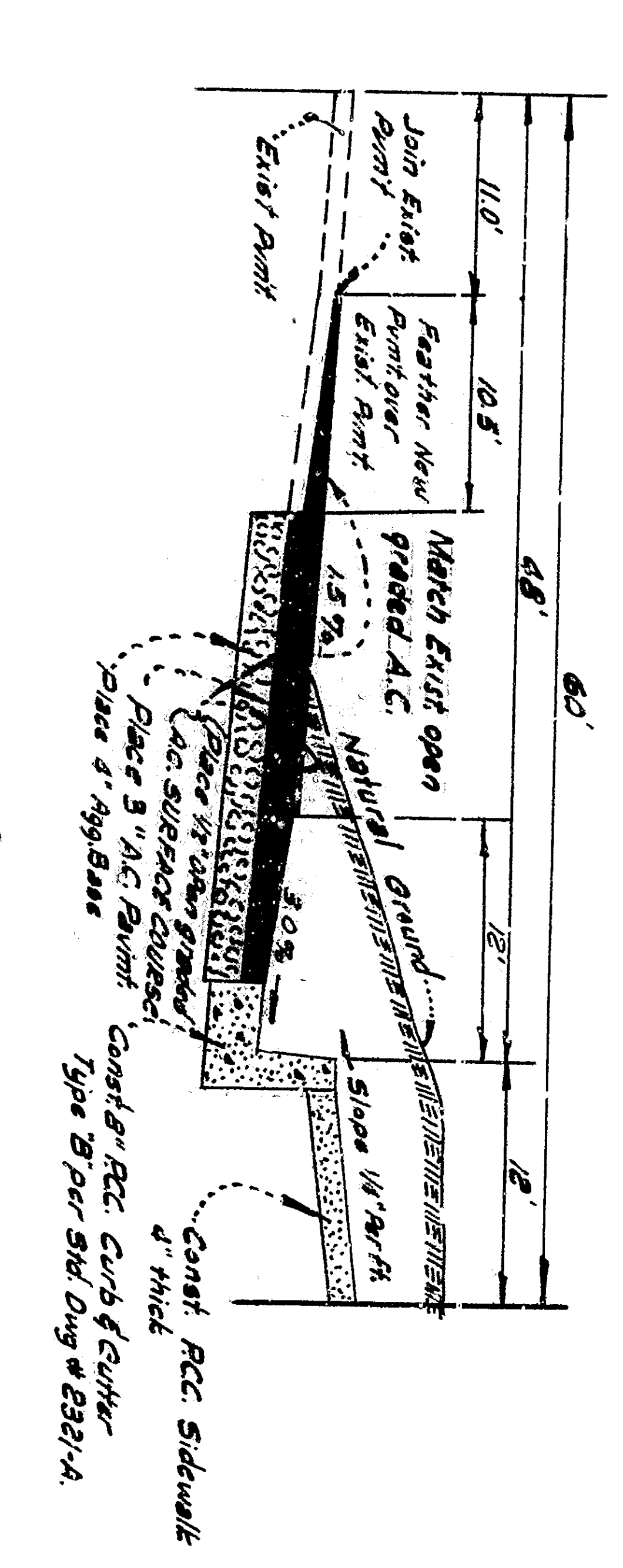


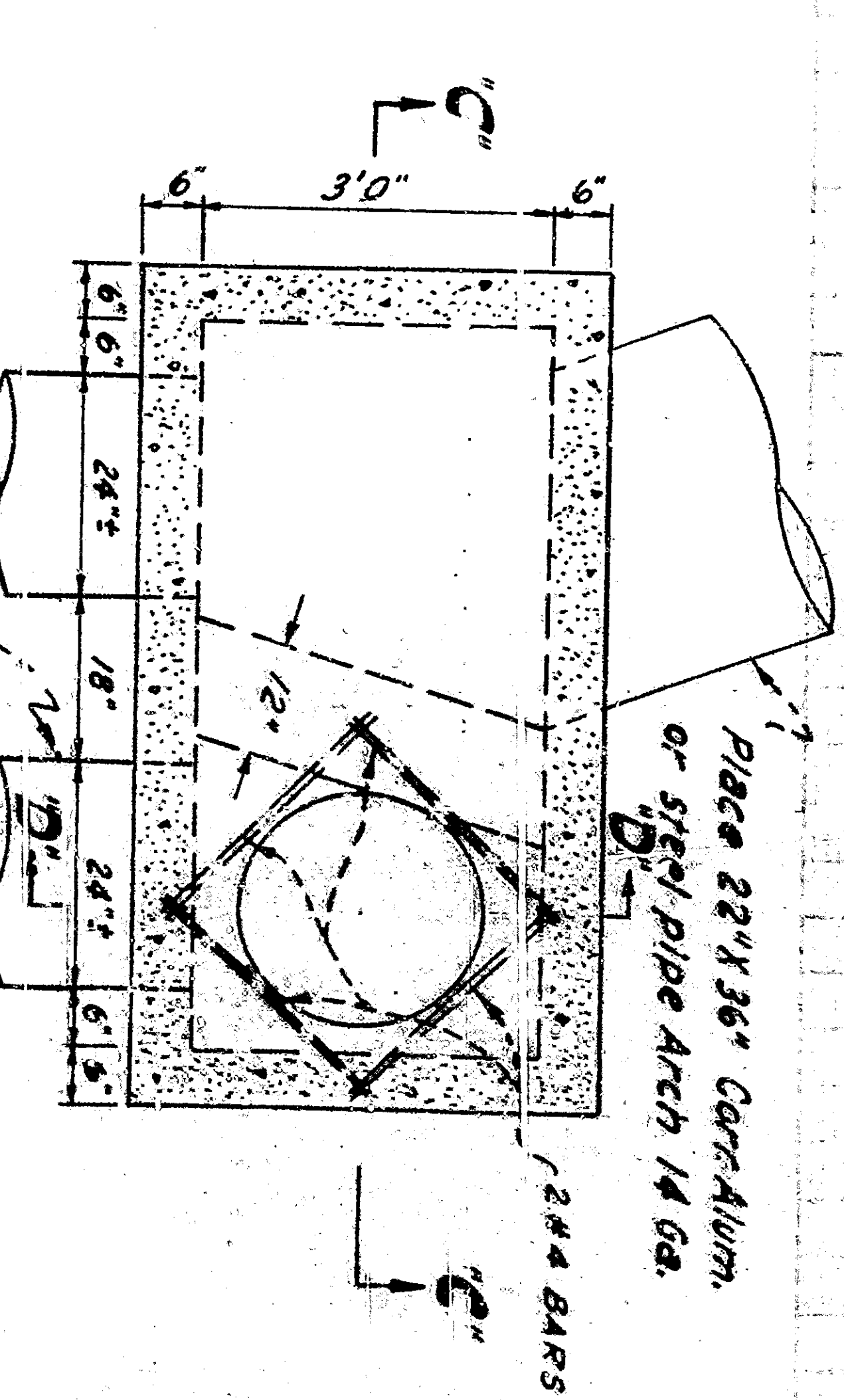
**HIGHLAND AVENUE**  
SCALE 1/4"=20'



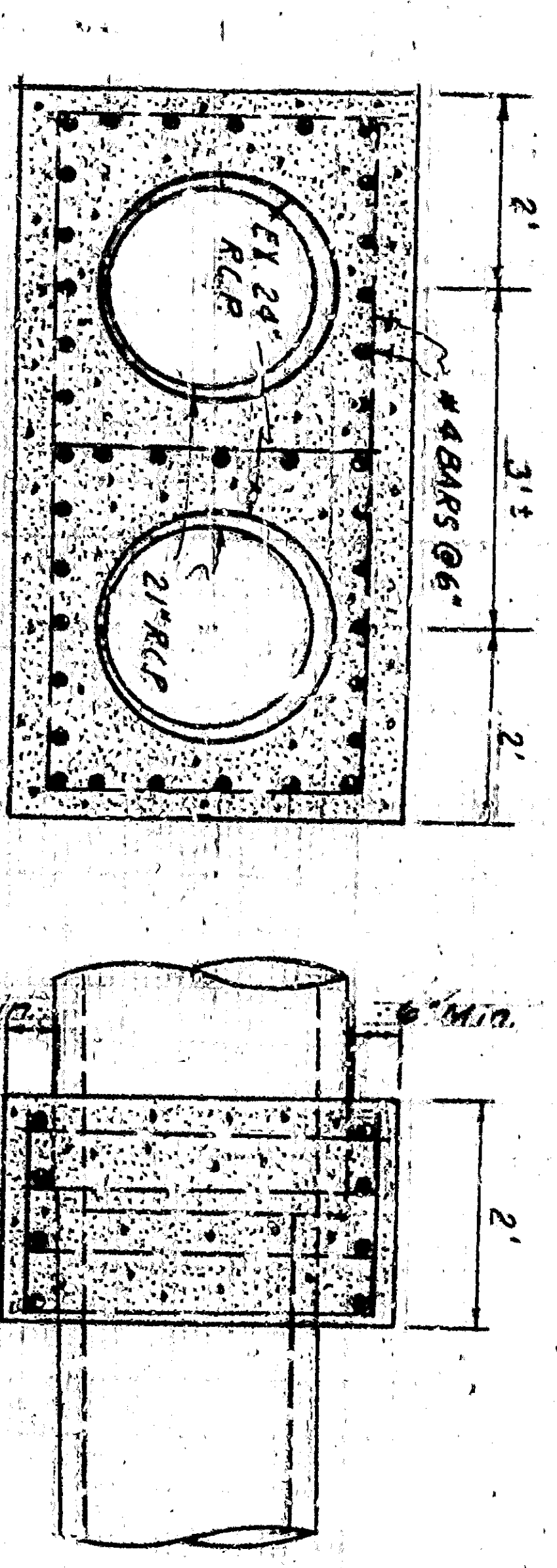
**SECTION A-A'**  
NO SCALE



**PLAN JUNCTION BOX**  
SCALE 1/2"=1'-0"

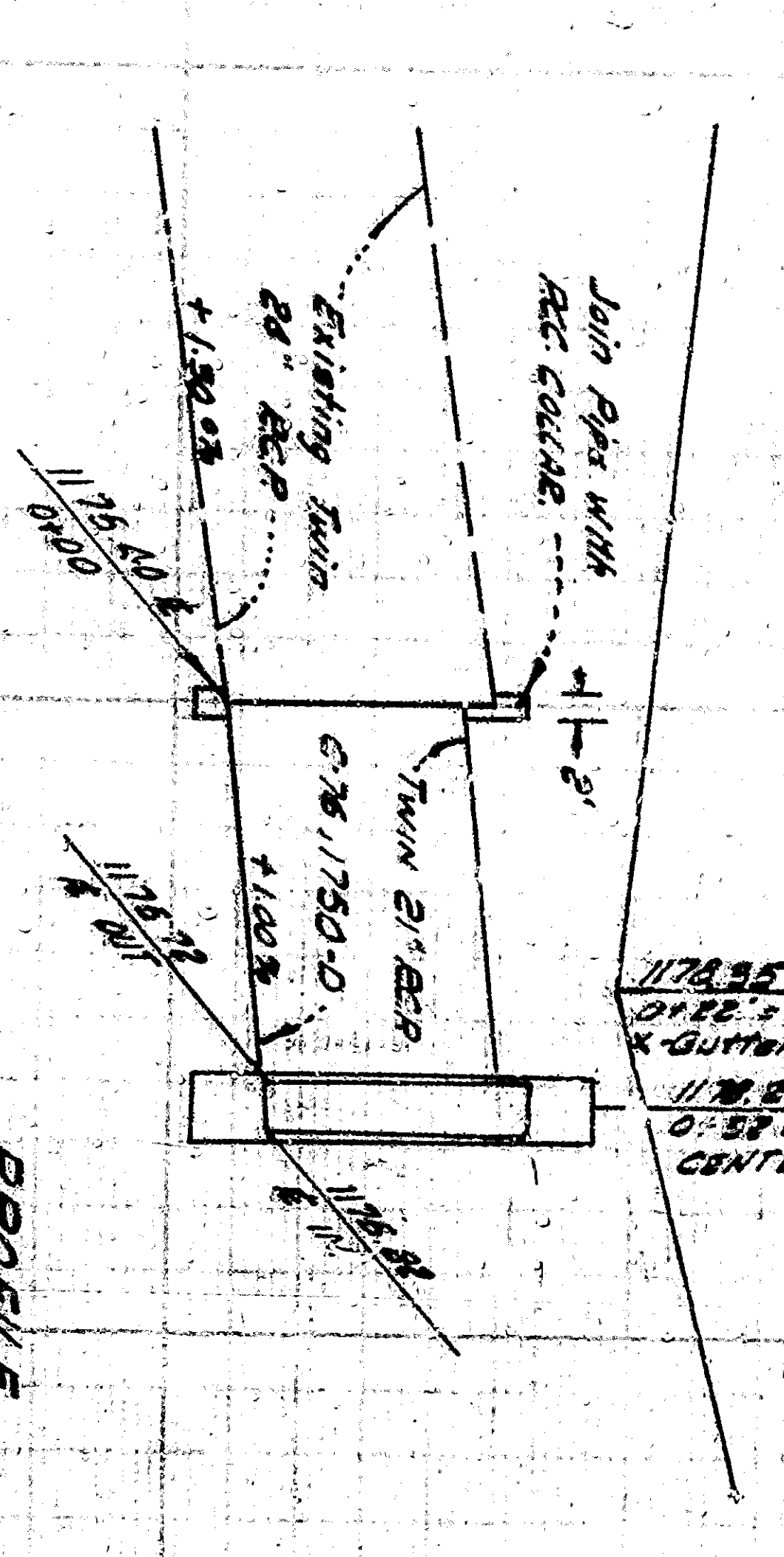


**DETAIL COLLAR**  
SCALE 1/2"=1'-0"

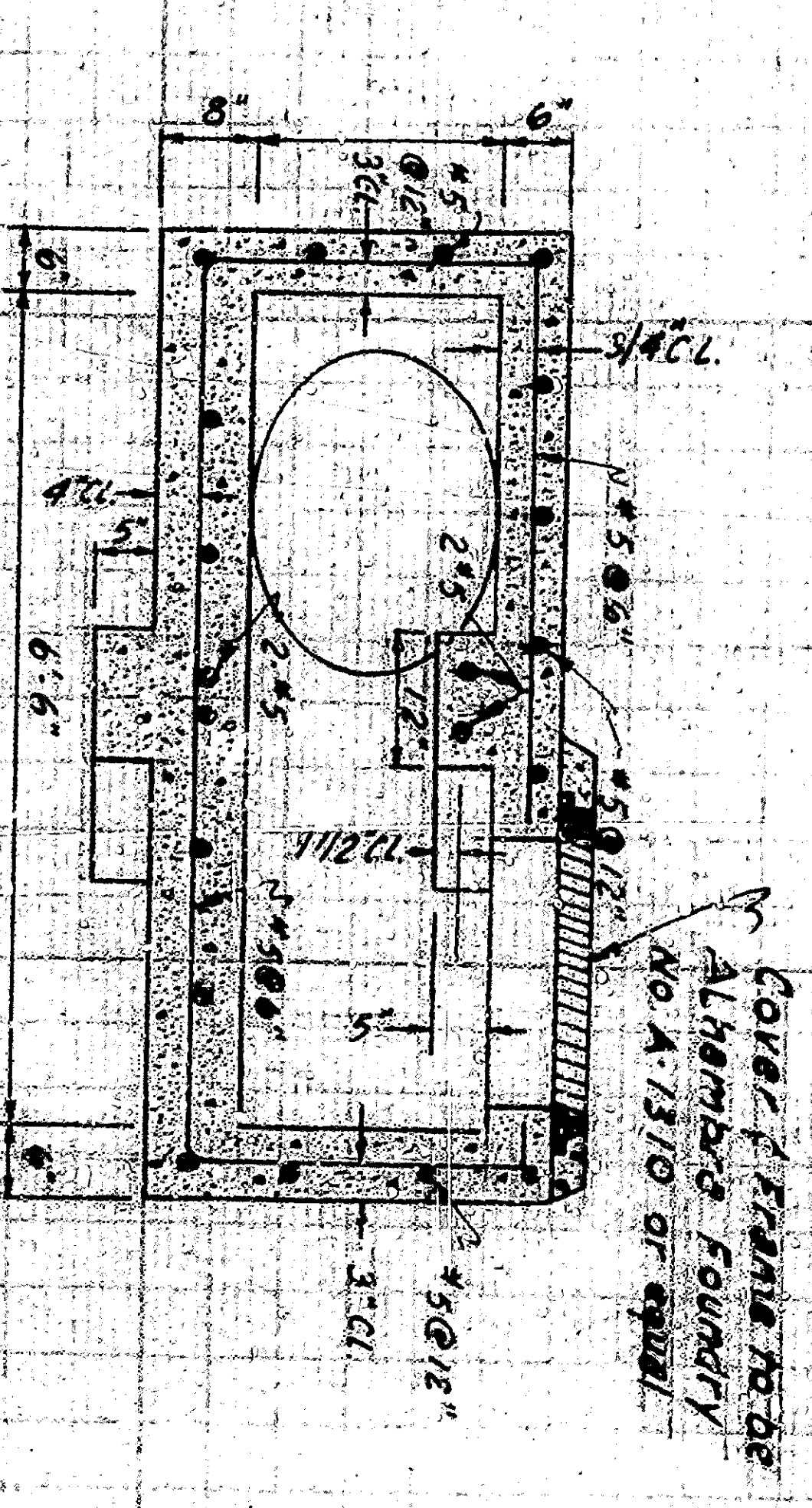


**HIGHLAND AVENUE**  
SCALE: HORIZ. 1/2"=20'  
VERT. 1"=2'

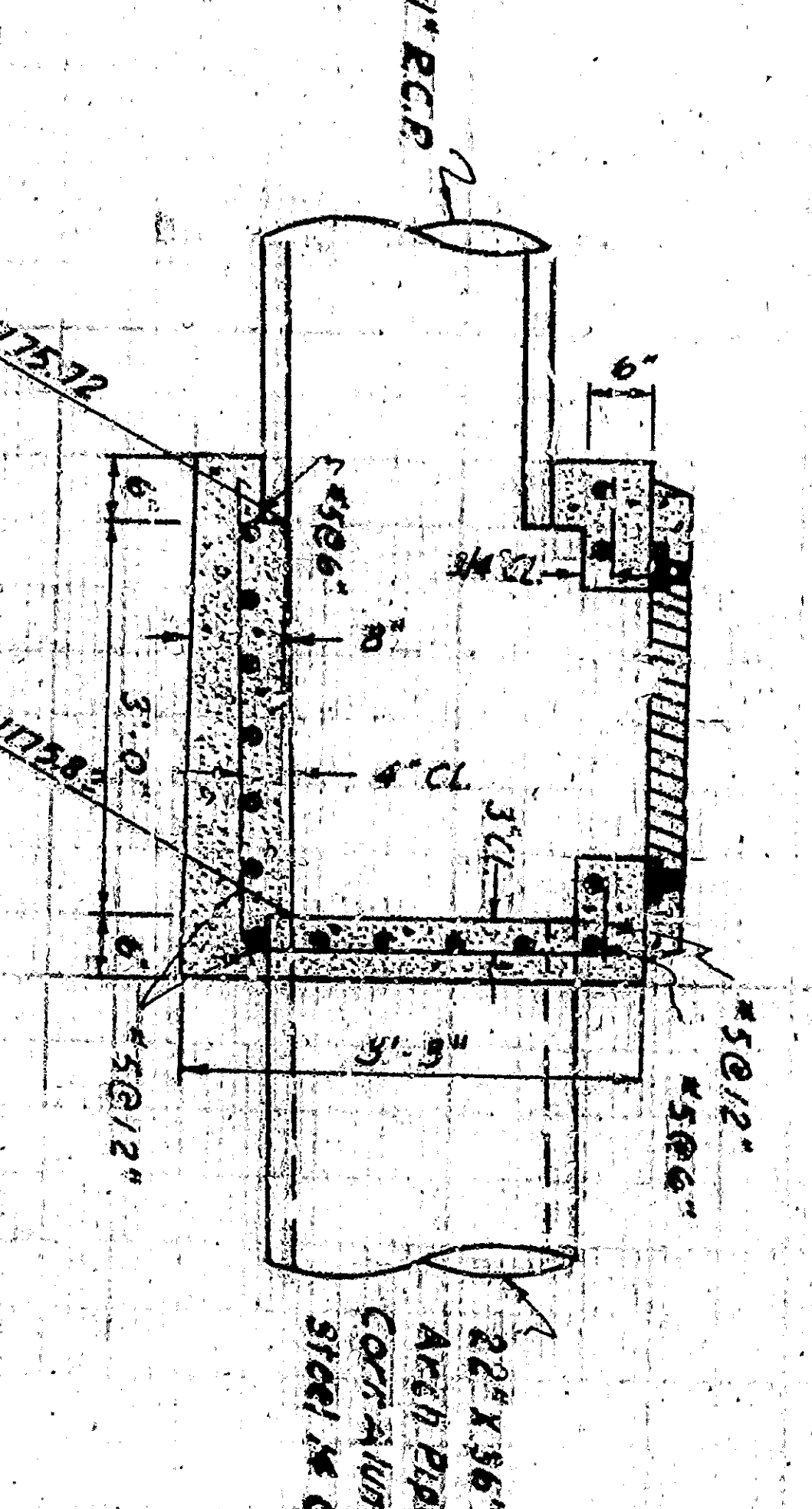
**TWIN 21" E.C.P.**  
SCALE: HORIZ. 20'  
VERT. 2'



**SECTION C-C'**  
SCALE 1/2"=1'-0"



**SECTION D-D'**  
SCALE 1/2"=1'-0"



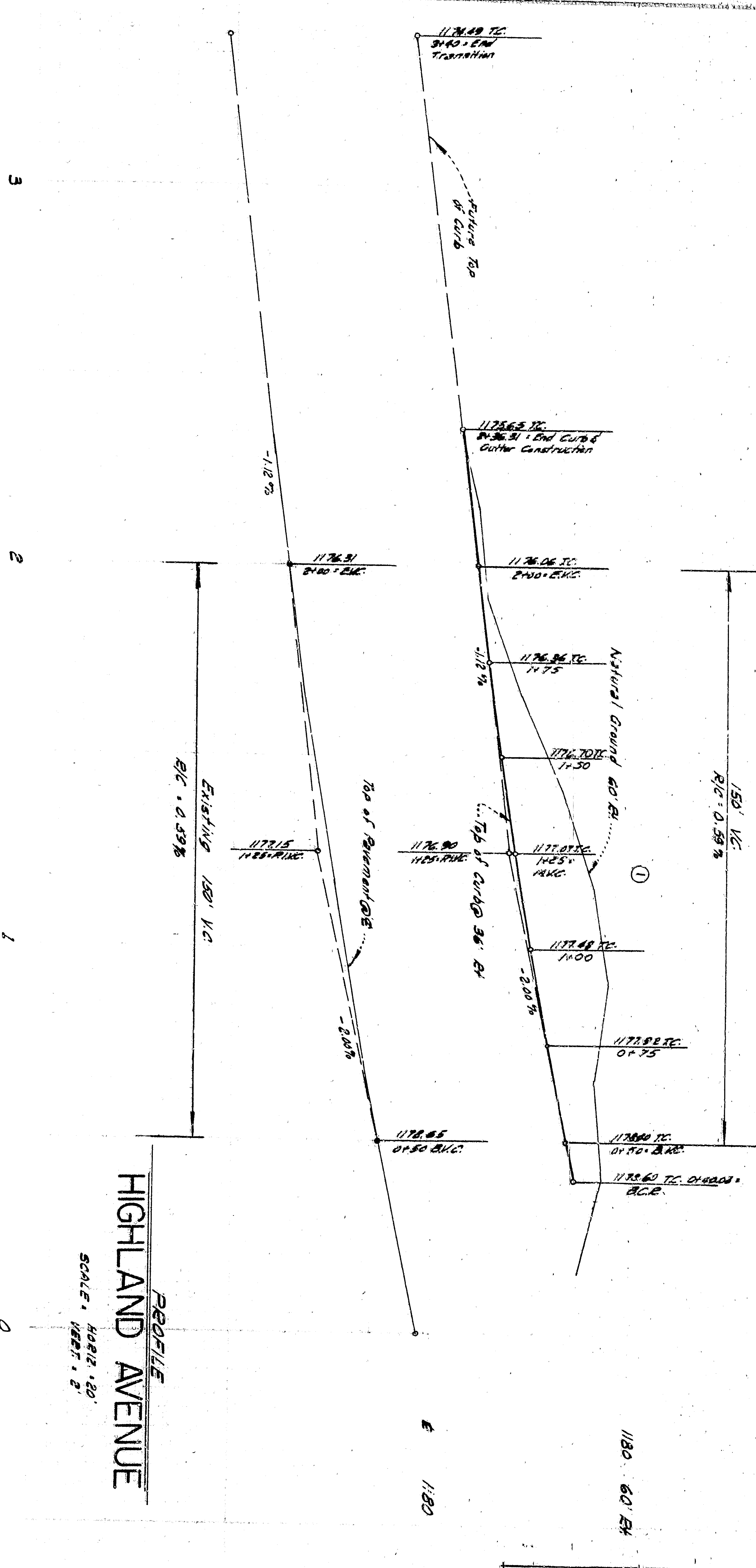
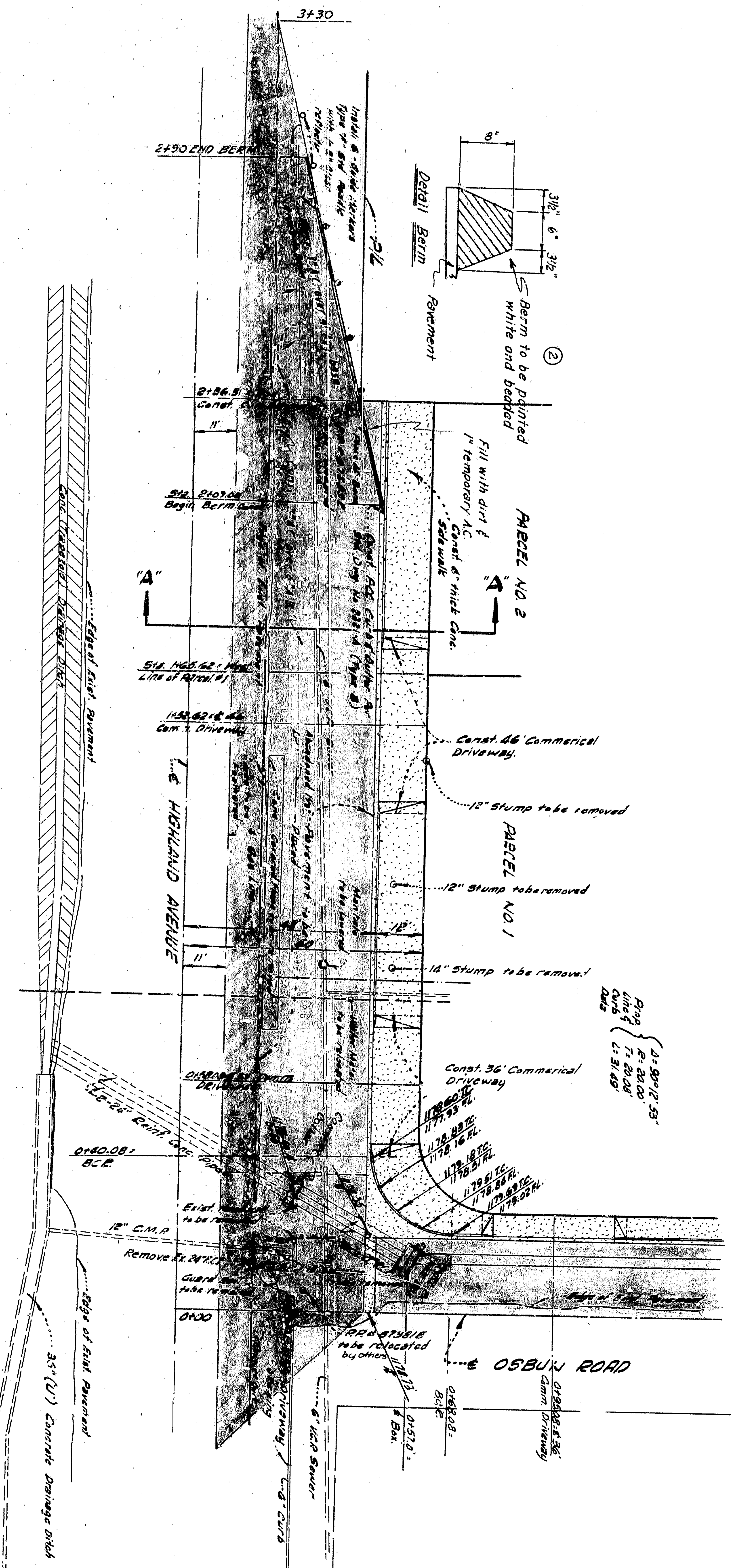
**NOTES:**  
1. All work embodied on these plans shall be done in conformity with applicable provisions of Standard Specification No. 227 (Rev. 10/1/41) and Standard Drawing No. 291 on file in the office of the City Engineer.  
2. BEVEL MESSAGE: U.S.C.T. 65, BUREAU OF PUBLIC WORKS, 501 CORNER OF HIGHLAND AVENUE AND SPRING STREET (NEW YORK). CON. 604 G. 2004 (2004).  
3. The utility company shall be notified 30 days prior to construction.  
4. All utility work shall be done in accordance with the City Engineer's Encroachment Permit No. 965 E 7601 6, on file in the office of the City Engineer.

*R. L. S. Beards*  
Registered Civil Engineer No. 14817

SUBMITTED BY		DATE	ENGINEER
APPROVED BY		DATE	ENGINEER
CITY OF SAN BERNARDINO			
IMPROVEMENT PLANS			
HIGHLAND AVENUE & OSBURN ROAD			
SHEET 1			

# HIGHLAND AVENUE

SCALE 1/2"=20'

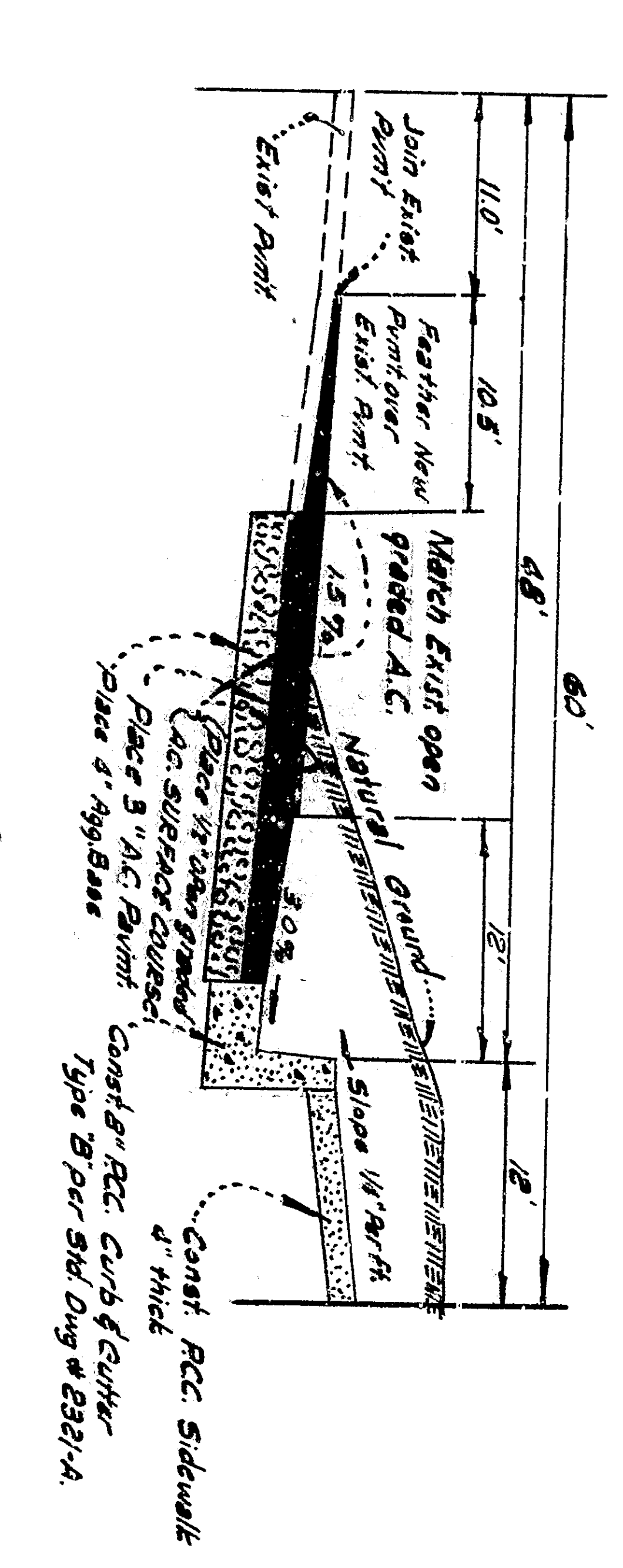


# HIGHLAND AVENUE

SCALE 1/2"=10'

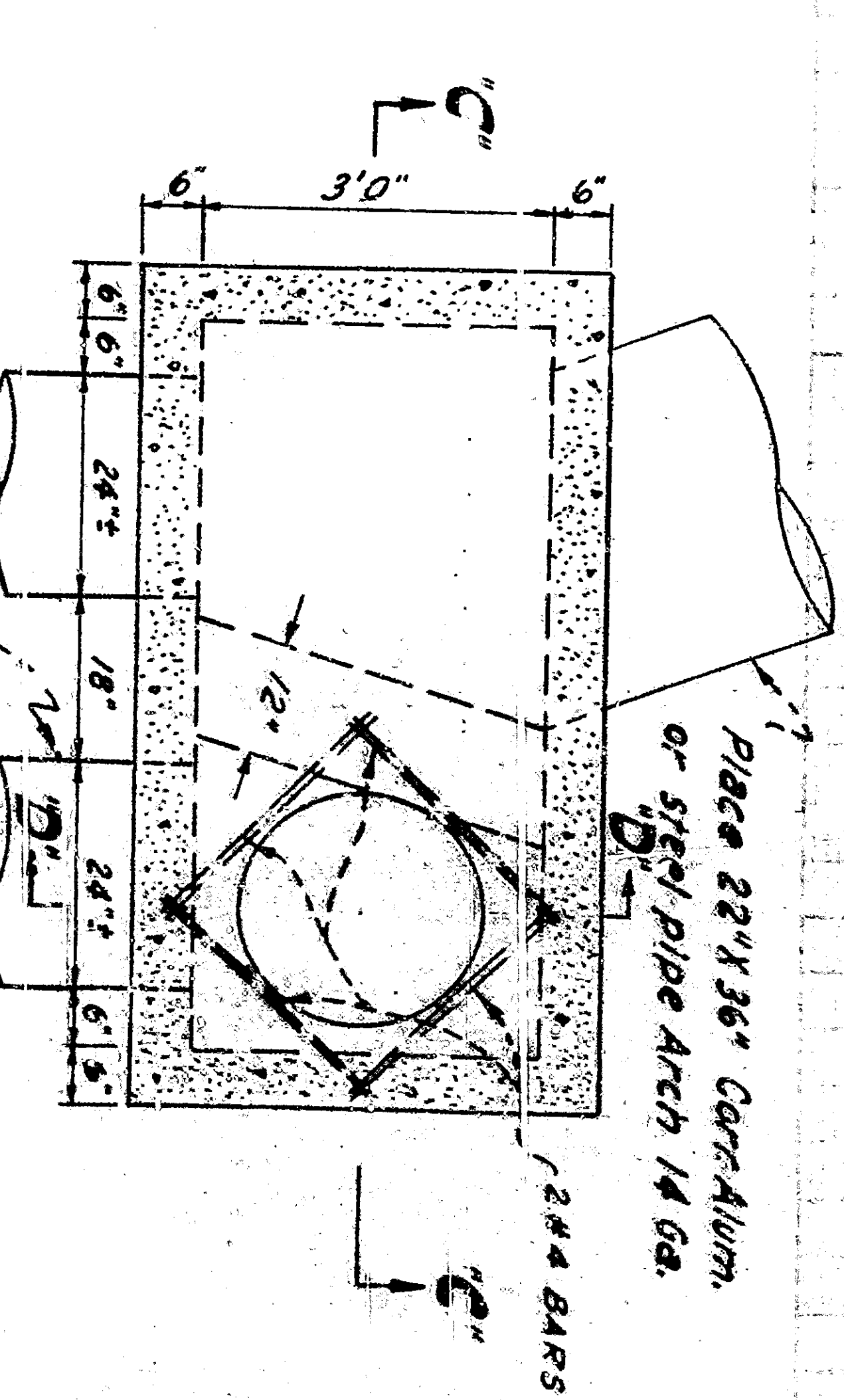
## SECTION A-A

NO SCALE



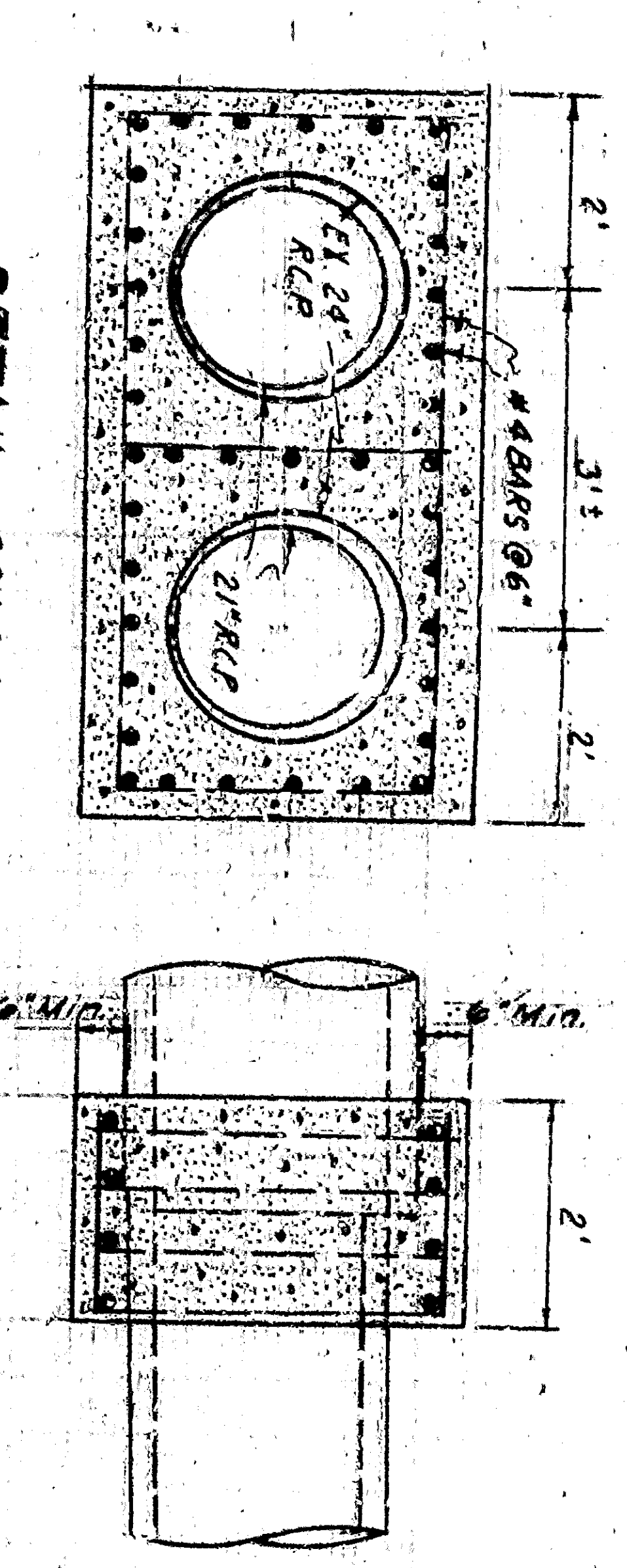
## PLAN JUNCTION BOX

SCALE 1/2"=1'-0"



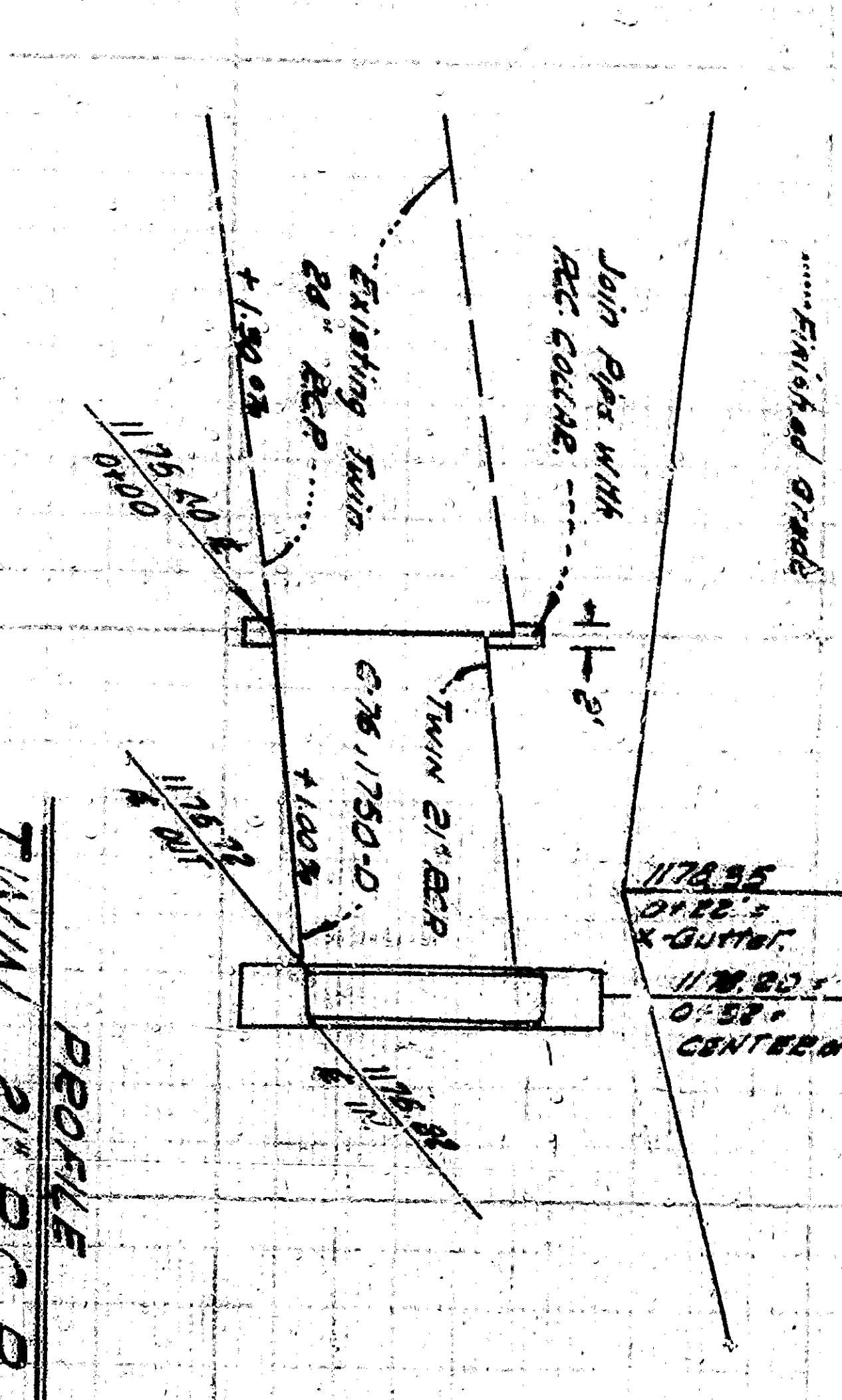
## DETAIL COLLAR

SCALE 1/2"=1'-0"



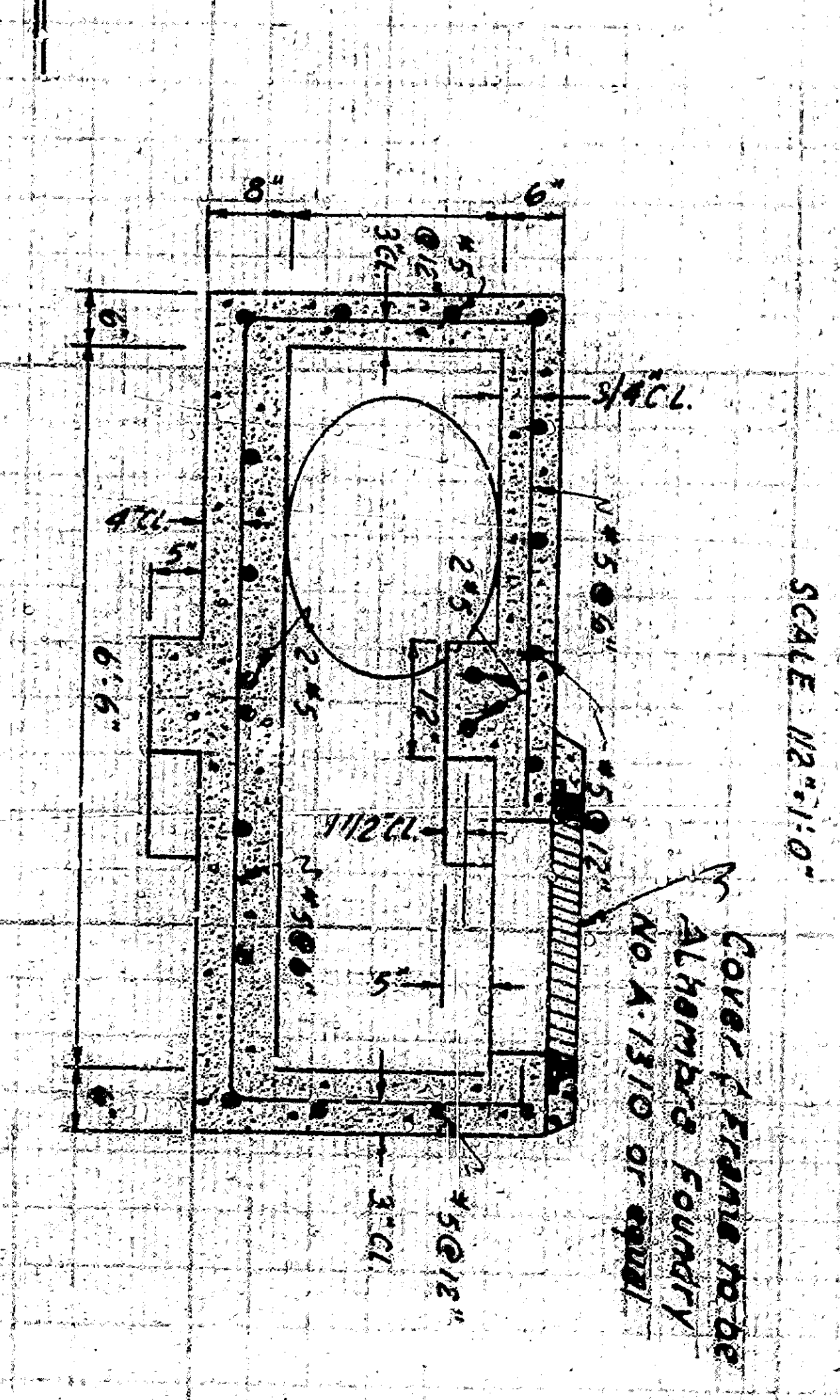
## TWIN 21" x 21" PROFILE

SCALE 1/2"=1'-0"



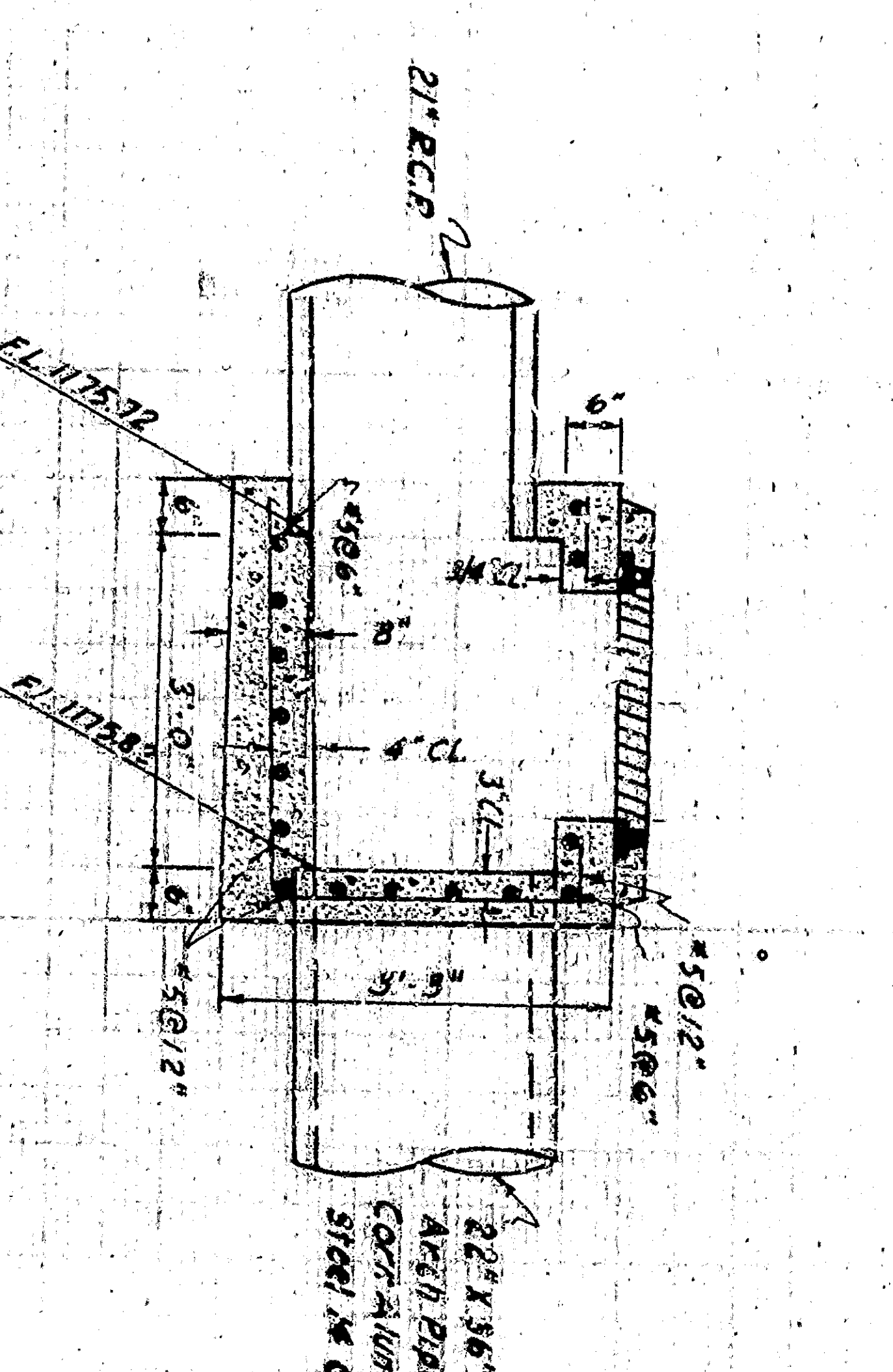
## SECTION C-C

SCALE 1/2"=1'-0"



## SECTION D-D

SCALE 1/2"=1'-0"



- NOTES:**
- All work embodied on these plans shall be done in conformity with applicable provisions of Standard Specification No. 227 (Rev. 10/1/41) and Standard Drawing No. 291 on file in the office of the City Engineer.
  - REVISION: 10/1/41, 5/5/42, 5/5/43, 5/5/44, 5/5/45, 5/5/46, 5/5/47, 5/5/48, 5/5/49, 5/5/50, 5/5/51, 5/5/52, 5/5/53, 5/5/54, 5/5/55, 5/5/56, 5/5/57, 5/5/58, 5/5/59, 5/5/60, 5/5/61, 5/5/62, 5/5/63, 5/5/64, 5/5/65, 5/5/66, 5/5/67, 5/5/68, 5/5/69, 5/5/70, 5/5/71, 5/5/72, 5/5/73, 5/5/74, 5/5/75, 5/5/76, 5/5/77, 5/5/78, 5/5/79, 5/5/80, 5/5/81, 5/5/82, 5/5/83, 5/5/84, 5/5/85, 5/5/86, 5/5/87, 5/5/88, 5/5/89, 5/5/90, 5/5/91, 5/5/92, 5/5/93, 5/5/94, 5/5/95, 5/5/96, 5/5/97, 5/5/98, 5/5/99, 5/5/100.
  - The utility company shall be notified 30 days prior to construction.
  - All utility lines shall be marked with orange paint.
  - Encroachment Permit No. 955 E 70176, on file in the office of the City Engineer.

*R. J. St. Bernard*  
Registered Civil Engineer No. 14817

NO.	REVISION	DATE
①	Note No 4 added and A.C. Beam pole pointed	5/1/41
②	Change widening on Highland Avenue	5/1/41

DEPARTMENT OF ENGINEERING  
CITY OF SAN BERNARDINO  
IMPROVEMENT PLANS  
HIGHLAND AVENUE &  
OSBURN ROAD

DESIGNED BY: R. J. St. Bernard  
DRAWN BY: J. W. ...  
CHECKED BY: ...  
DATE: 5/1/41